

WM2100

Multiband GSM Wall Mount Antenna

Features

- Multi-band GSM/3G Antenna
- Supplied with wall mount bracket
- Groundplane Independent
- Various cable/connector options

Specifications

Radiating element	Dipole
Frequency range	850/900/1800/1900 MHz and 2.1 GHz
Gain	2.2 dBi
Polarisation	Linear
Return Loss	<-9 dB
Power rating	10W
Cable / Connector	3M RG-174 and SMA-Male
Dimensions	138 x13 mm (max)

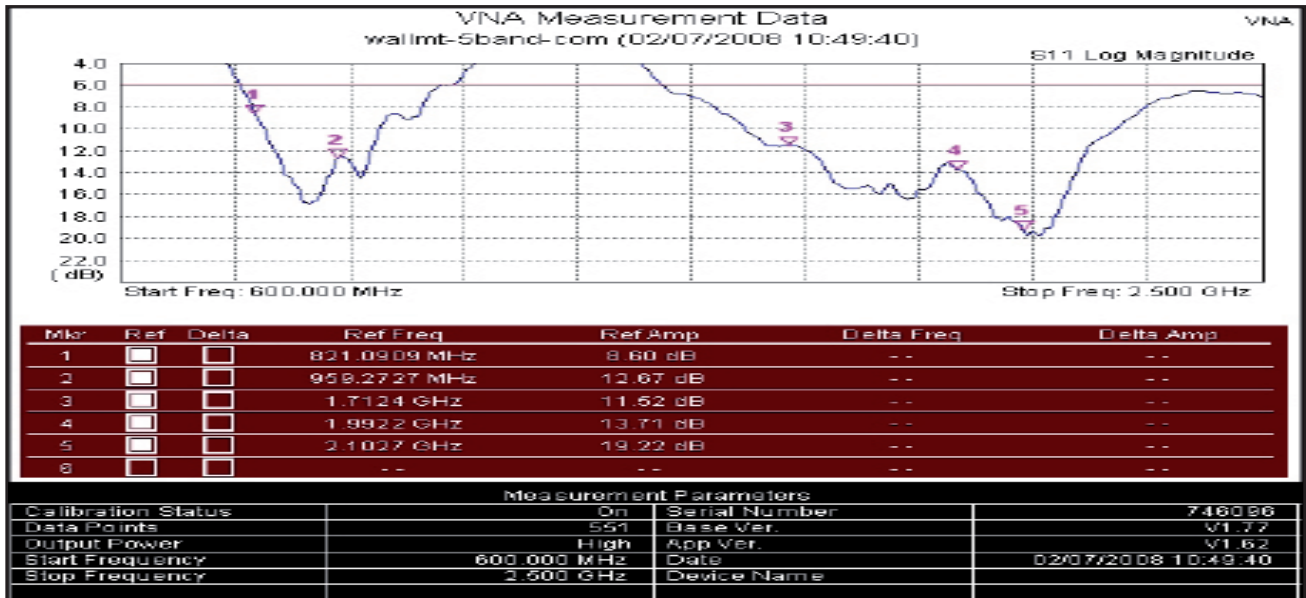
Ordering Options

FMWG35145-SM-3K	Multi-Band GSM Wall Mount with 3M RG-174 and SMA-Male
-----------------	---

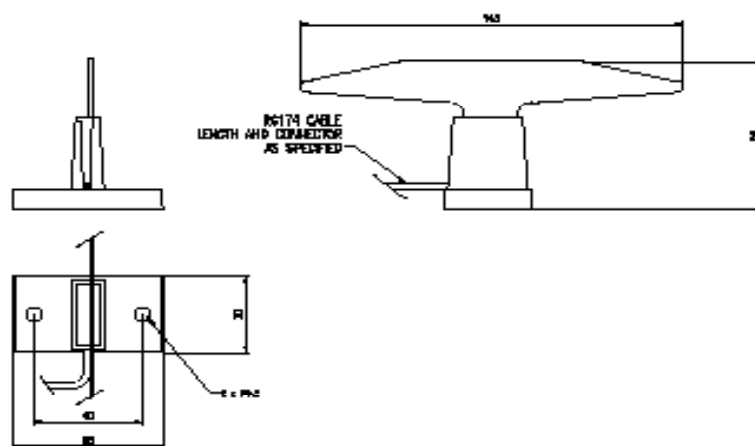
Specifications subject to change without notice.

WM2100 | Multi-Band GSM Wall Mount Antenna

Return Loss



Outline Drawing



Specifications subject to change without notice.

5 Little Balmer
Buckingham Industrial Park
Buckingham
MK18 1TF
UK

Tel: +44 (0)1280 824055
Fax: +44 (0)1280 817179
Email: sales@ead-ltd.com
Web: www.ead-ltd.com

EAD
embedded antenna design ltd
Delivering Antenna Innovation